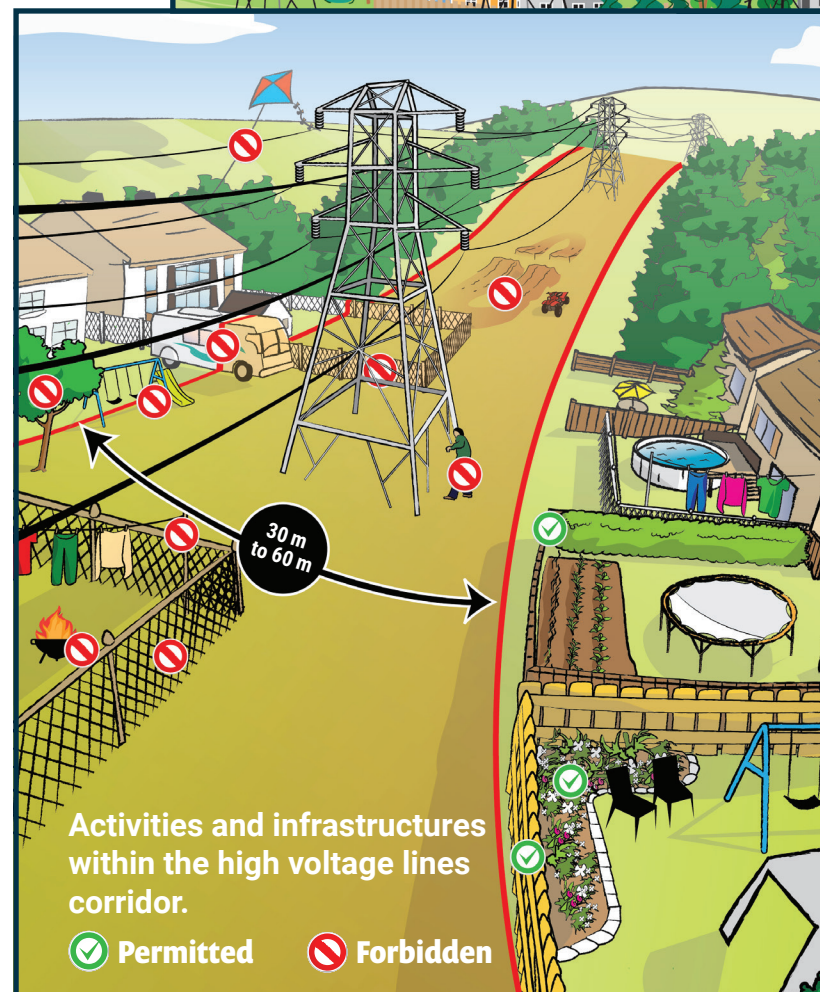
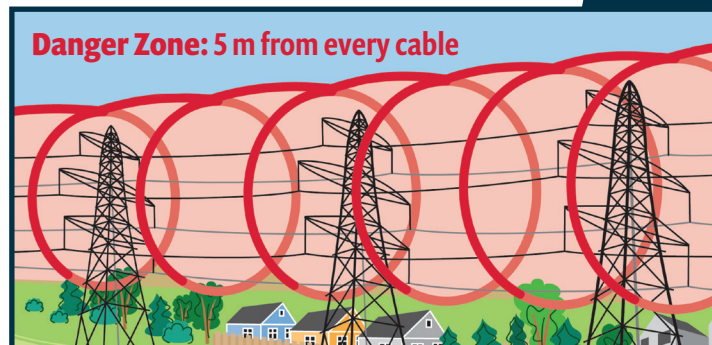


# Working together to ensure your safety and ours

## FOR SAFE AND RELIABLE HIGH-VOLTAGE LINES

In the qathet region, Evolugen by Brookfield Renewable operates high-voltage transmission lines that carry the electricity between our Lois and Townsite generating facilities. Our transmission corridor crosses through Townsite, behind the complex, hospital and across Padget Road through to Stillwater. If you live near the line or travel within the corridor, read this brochure to ensure your safety.



### ⚡ THE DANGER

The lines voltage is 600 times greater than that of a regular outlet. Anyone who goes within 5 meters of one of our lines could be electrocuted without even touching it. It is also extremely dangerous to be in contact with an object that is within 5 meters of the lines **even if that object is not touching a line**. Be aware, the height of the cables varies with the electrical load and weather conditions. As a rule the warmer the weather the lower the line. **Please stay away from towers and lines.**

### ! EMERGENCY: 911

If an overhead cable or a tower is damaged or downed, or if something touches a cable, it is an emergency. **Stay back and dial 911.**

### Easement and right of way

In the qathet region, Evolugen owns or has rights of way over the full length of our transmission corridor and under the lines, between the metal towers. Our rights of way vary between 30 and 60 meters in width. **Call us if you are unsure of the location of corridor rights of way.**

## Rules to follow within the high-voltage lines corridor

Evolugen restricts certain activities and structures to ensure your safety and the proper functioning of the lines. Please contact us if you are unsure about the safety of your activities within the corridor.

### 🌳 PROPERTY DEVELOPMENT

- No building structures (gazebos, temporary shelters, garages, sheds, greenhouses etc)
- No lamp posts, poles, clothes lines
- No metal fences or structures
- No trees that could grow taller than 1.8 meters. Trees will be topped if they are greater than 1.8 meters.
- No permanent or temporary storage of materials, goods or garbage, soils etc.
- No change to the level or the slope of the ground (no digging or filling)
- No water gardens, fountains or artificial ponds
- No fireplaces or fire pits beneath the lines
- No obstacles that will prevent access to the transmission lines or tower by maintenance workers.

### 🏃 SPORTS, GAMES AND LEISURE

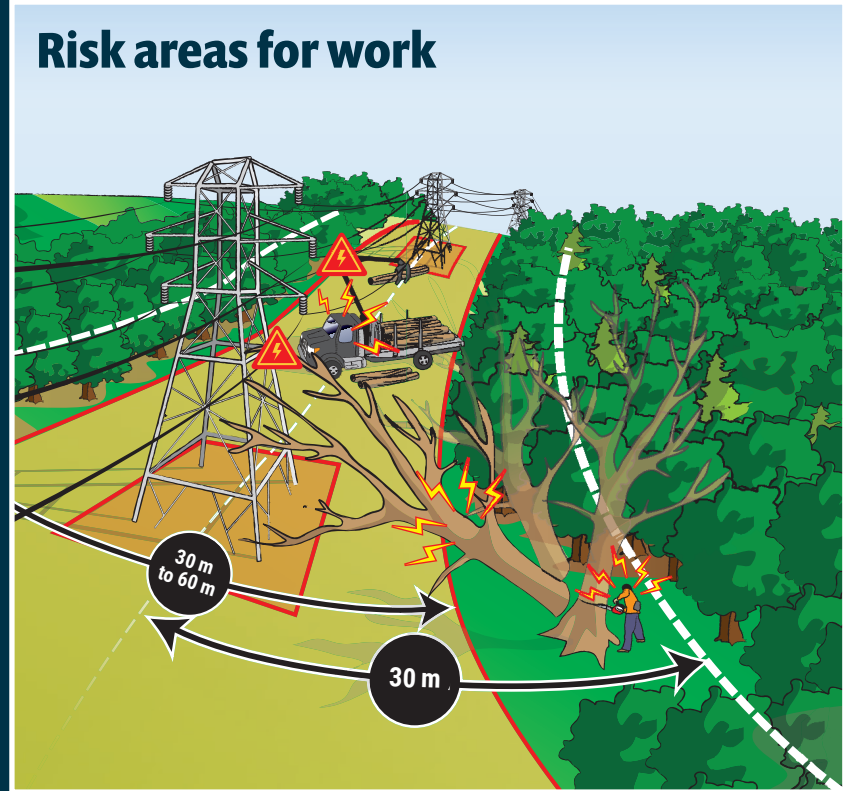
- No children's play structures (swings, trampolines, slides or other);
- No spas or swimming pools;
- No games or toys that might come dangerously close to or in contact with the power lines such as kites, water guns, drones or remotely operated airplanes;
- No fireworks close to the electrical wires or towers.

### 🚗 VEHICLES AND HEAVY EQUIPMENT

- No parking (recreational vehicles, trailers, boats or heavy equipment);

## Working together to ensure everyone's safety

To ensure our safety and to better serve our customer, Evolugen maintains the corridor and regularly inspects the high-voltage lines and corridors. By following the safety rules, you will protect your family and reduce the risk to our employees when they are at work. The safety of the public and employees are a top priority at Evolugen.



### Projects?

Contact us before you cut down trees less than **30 meters** from the transmission lines or are going to use heavy equipment beneath our lines or within our corridor. Your safety is important to us.

### Children's safety

Let children know the dangers of going near electrical cables or climbing towers. Explain that it is important to obey signs warning of danger and that they should never fly kites near power lines.

#### For more information

Contact us at 604-485-2223 or at [bc.info@evolugen.com](mailto:bc.info@evolugen.com)

#### You can also visit

[evolugen.com](http://evolugen.com) and [powellriverenergy.com](http://powellriverenergy.com)

### EMERGENCY: 911

